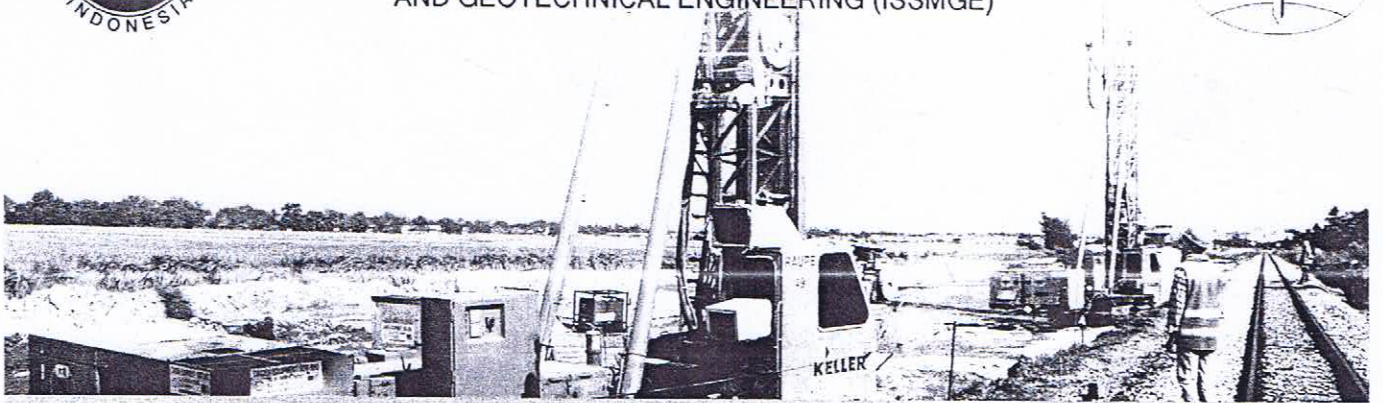
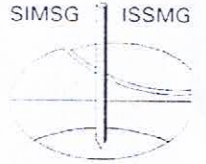




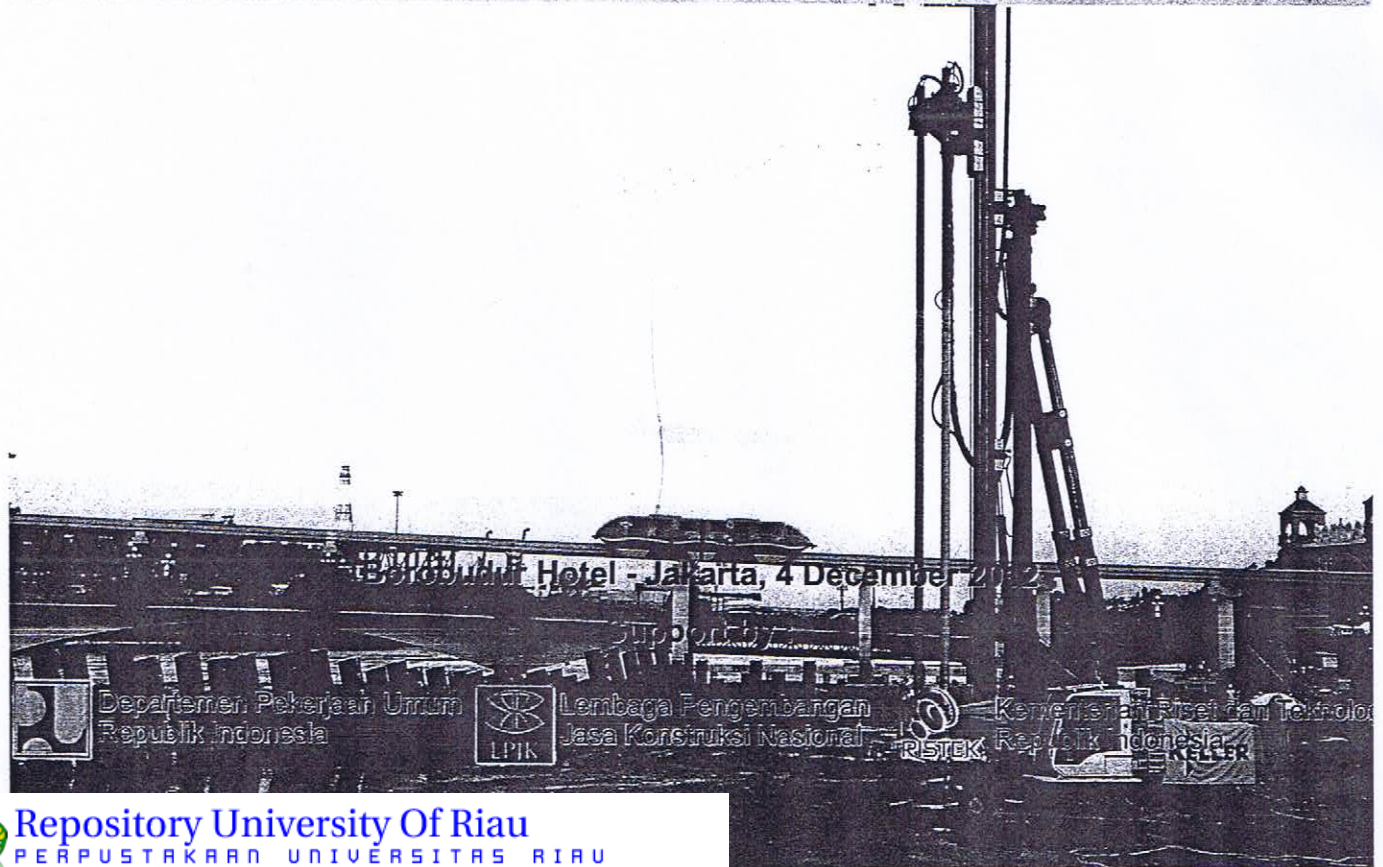
HIMPUNAN AHLI TEKNIK TANAH INDONESIA
INDONESIAN SOCIETY FOR GEOTECHNICAL ENGINEERING (ISGE)
MEMBER SOCIETY OF INTERNATIONAL SOCIETY FOR SOIL MECHANICS
AND GEOTECHNICAL ENGINEERING (ISSMGE)



Proceedings

16th Annual Scientific Meeting

**"Geotechnical Challenges in Present
and Coming Nationwide Construction Activities"**



Borobudur Hotel - Jakarta, 4 December 2012

Sponsored by



Departemen Pekerjaan Umum
Republik Indonesia



Lembaga Pengembangan
Jasa Konstruksi Nasional



Kementerian Riset dan Teknologi
Republik Indonesia



Repository University Of Riau

PERPUSTAKAAN UNIVERSITAS RIAU

<http://repository.unri.ac.id/>

Proceeding 16th Annual Scientific Meeting
Jakarta, 4 December 2012

“Geotechnical Challenges in Present and Coming Nationwide Construction Activities”

Editor : *Hasbullah Nawir*
Bigman MARIHAT Hutapea
YP. Chandra
Widjojo Adhi Prakoso
Paulus Pramono Raharjo
Hendra Jitno

HIMPUNAN AHLI TEKNIK TANAH INDONESIA
INDONESIAN SOCIETY FOR GEOTECHNICAL ENGINEERING (ISGE)
Basement Aldevco Octagon, Jl. Warung Jati Barat Raya No. 75
Jakarta Selatan 12740



Repository University Of Riau

PERPUSTAKAAN UNIVERSITAS RIAU

<http://repository.unri.ac.id/>