

# INSTITUTION

## 1. Lembaga Penelitian UR (Lemlit)

### *Research Institution UR*



#### *Background*

*Riau University Research Institute was established under a Decree of the Rector UR No. 434/PT22/HIQ/1994. These institutions were managed and supervised by experienced researchers and assisted by guest researchers both from within and from abroad. Main tasks and Function Research Institute University of Riau, ie: services, coordination and administration activities associated with research at the University of Riau, Riau University to set up a Research University.*

#### *Vision*

*Realizing the scientific community Riau University of competent and active in research activities especially in fields related to basic scientific pattern Riau University of aquatic resources development and cultural areas wither.*

#### *Mission*

- 1. Organize, coordinate, and manage research and to improve the atmosphere and culture conducive research.*
- 2. Conducting research that is able to solve the problems of development.*
- 3. Promote the dissemination / publication of research results through learning, dedication and a variety of other information media.*

### *Owned Research Agenda*

*Direction of Research at the University of Riau Based on:*

- 1. The focus of National Development of Science and Technology, ie: energy, food, health and medicine, agriculture and information and communication technology (ICT)*
- 2. Riau Development Master Plan based on the Watershed (DAS)*
- 3. University of Riau's principal scientific pattern of development of Area Resources and Malay waters.*

### *Focus*

*Riau University research focuses are as follows:*

- 1. Study various aspects of Natural Resources and Human Resources Watershed (DAS)*
- 2. Study various aspects of Natural Resources and Human Resources Coastal Malacca Strait*
- 3. Malay cultural studies*

### *Organization*

*In accordance with the Statute of the University of Riau, Riau University Research Institute headed by a Chairman of the Institute is assisted by the Secretary of the Institute, experts and administrative staff. The institute is coordinating its activities on structural research centers and two centers. Research centers and existing centers are as follows:*

- 1. Research Center for Coastal and Aquatic Areas (PPKP)*
- 2. Research for Culture and Community (PPKK)*
- 3. Research Center for Women Role (PPPW)*
- 4. Research for Social and Economic Affairs (PPSE)*
- 5. Research Center for Population (PPK)*
- 6. Research Center for Environment (PPLH)*
- 7. Research Center for Biotechnology (PPBiotek)*
- 8. Promotion Center for Technology*
- 9. Center of Intellectual Property Rights (HAKI)*

*In addition to structural research centers above, there are again some non-structural research centers, among others: (1) Center for Political Studies and Regional Collaborations (2) Research Center Industry and Urbanization (3) Center for Technology and Rural Development (4) Research Center for Coastal and Aquatic Areas (5) Research for Culture and Community (6) Research for Social and Economic Affairs and (7) Research Center Energy and Technology.*

#### *Activities*

*Each year the Research Institute of the University of Riau perform about 200 studies conducted by research centers, faculty, laboratory, workshop / studio and the other units. Research conducted on the development-oriented science and technology, human resources development to support national development programs and regional and institutional development. Research funding comes from various sources of funding include SPP / DPP University of Riau, DIK / DIK-S, the Fund Routine, funds Directorate of Research and Community Empowerment (DP3M), Directorate General of Higher Education, Planning, Riau Province and other sources.*

*Other activities carried out (1) research methodology workshops (2) laboratory management workshops (3) scientific writing workshop (4) creating a data base of research (5) race of faculty and student research seminars (6) Indonesia and the nature of journal publishing journal research (7) publishing research results digest (8) management development research institutes (9) regular meetings of scientific biotechnology (10) distributing information bulletins research institutes (11) role of technology (12) evaluation of research centers (13) property rights training intellectual (14) scientific seminars (15) research collaboration and (16) special training by the research center (eg AMDAL by PPLH).*

#### *Publication*

*Universitas Riau Research Institute has published two journals to further expand dissemination of research results. Both these journals are the Journal Nature Indonesia accredited B DIKTI MIPA Field with ISBN 1410-9379 and Journal of Research University of Riau by ISBN 0825-0585, each journal published twice a year.*

### *Cooperation*

*University of Riau Research Institute formed a partnership with various parties outside the University of Riau. Conducted with various forms of cooperation such as planning and implementation of joint research, funding of research activities, exchange of information research, improving the ability of researchers and joint research. The cooperation has been conducted among others by Nippon Koi / Japan Bank for International Commerce, Higher Education, Balitbangda Riau Province, some local government in Riau, Riau PLN Region and many more other institutions, both public and private.*

### *Research Center for Population*

*This research program outlined by the Research Institute as above. Research aimed at the transformation problem in the territory waters and aquatic environmental impact. Other activities that journals publish content related to the areas of work KDP. It also implement the program publication of research results, scientific meetings and training in various fields related to demography.*

### *Research Center for Environment*

*Environment Research Centre (PPLH) University of Riau always concentrate on the aspects of environmental impact issues territorial waters. Research programs carried out as specified Research Institute. PPLH periodically publishes scientific journals, training, programs, publication of research results, and scientific meetings such as discussions, seminars and other scientific meetings.*

### *Research Center for Women Role*

*Research Center for Women was established in November 1990 with the name (KSW). But since January 1995 after the statute University of Riau determined. KSW transformed into the Research Center for Women (P3W), which then better known as the Center for Women's Studies (PSW). The existence of this institution to open horizons of thought and opinion that women can play a role in development. Women are not only lovers of development, but also the perpetrator and the conduct of development. Gradually this institution was determined to increase the backwardness of women, the internal routines are held in the form of monthly*

*meetings, training, organization and management, organization and management, women's organizations, and other relevant activities.*

#### *Research for Social and Economic Affairs*

*Socio-Economic Research Centre is very concerned with various problems, especially ilm knowledge creation and improvement of technology and problem transfortasi territorial waters in the territorial waters in accordance with the PIP University of Riau. Economic development and social phenomena that encouraging local and regional center makes this increasingly bright prospects. The Centre has conducted various research activities and cooperation with various parties including local government as Bappeda Tk I and Level II, and the private sector. The Centre has also published a journal, and held various scientific meetings.*

#### *Research Center for Coastal and Aquatic Areas*

*PPKPP research programs carried out in accordance with what is prescribed by the Institute for Research in an effort to implement the PIP. The center is always memfokuskan activities to the creation and improvement of technology in addition to the territorial waters of the research activities carried out independently. Many other activities including training and exchange of information.*

#### *Quality Assurance University of Riau*

*Efectifvity performance in teaching and learning and improve academic atmosphere is strongly influenced by the quality standards to be achieved and the Quality Assurance process should be done. UR is already have a Quality Assurance Unit (UPM) sejak 2003. But only in 2005 UPM began functioned more incentive. At the end of 2006 UMP menyusun book "Quality Assurance System for Universitas Riau" with disiolisasikan to each Member of Quality Assurance in their respective faculties and units within the UR. Quality Assurance System Implementation System (PJM) is done in stages.*

*Until now, implementation is still limited quality Guarantor guarantor of academic quality, not to touch the grain of the other quality. Obstacles faced is the lack of socialization and information on the mechanism of the guarantor of quality desired by UPM University of Riau due to limited human resources, which exist, so that understanding and commitment ins.*

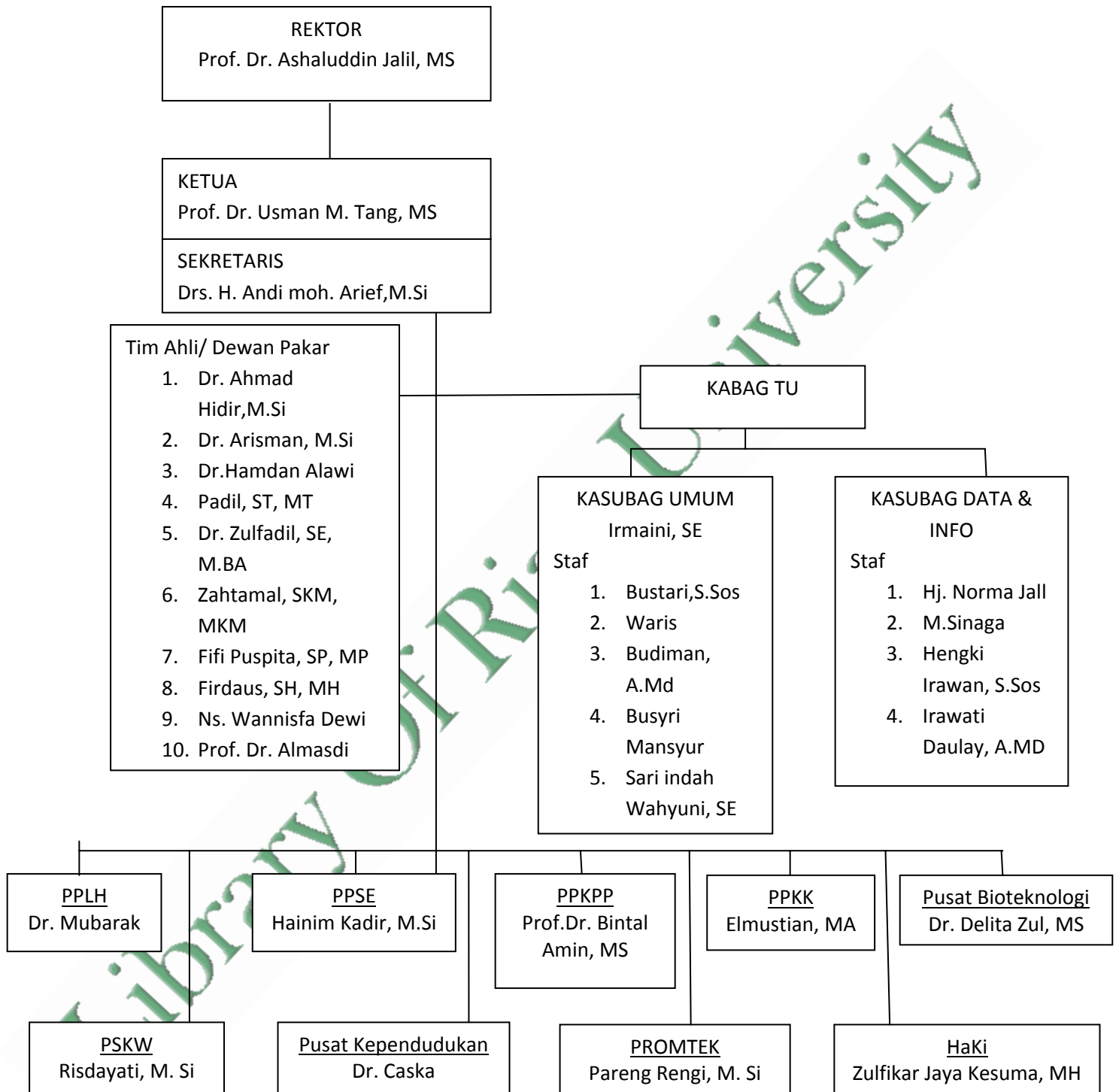


*Dissemination and implementation of the guarantor of quality is not optimal, causing the performance of academic quality assurance and management are still low.*

*To overcome this, the future strategic and sustained efforts are needed regarding the strategic dissemination and implementation of quality guarantee system in the form of Mastery UR Institutional Capacity of Education and Training activities of PJM. Dissemination and Publication PJM system, preparation of policy and procedures manual quality objectives of each unit of the existing quality and preparation of the budgeting system and the provision of infrastructure, tools and guidelines for evaluation of PJM.*

*UPM Organization at the University of Riau is representative of all faculties and units within the University of Riau. The key success of the implementation of PJM system in higher education are: 1) The commitment of all leaders of PT, 2) the commitment of the management of PT, 3) the commitment of each individual who will perform the quality system, the consistency is always maintained in all activities and decision making / attitudes, and 4) the availability of accurate data base used in any decision-making. The main problems faced by UPM UR is a system of data collection and the limited availability of competent resources. As a result, to obtain complete and accurate data in a short time is very difficult to realize. For the development system of data collection and provision of competent personnel to operate the system is urgent realized.*

**Organizational Structure**



*Professor*

*Professor of University of Riau has been owned as many as 45 people consist of 15 people professorship in the sciences of non-exact and 30 professors in the field of exact sciences.*

Selajutnya dapat diakses dari <http://www.unri.ac.id/lemlit>

*Source: Research Institutions UR (Lembaga Penelitian UR) tahun 2011.*

Library Of Riau University



## **2. P2K2 (Pusat Pengembangan Karir dan Kewirausahaan)**

### ***Career and Entrepreneurship Development Center***

#### *Background*

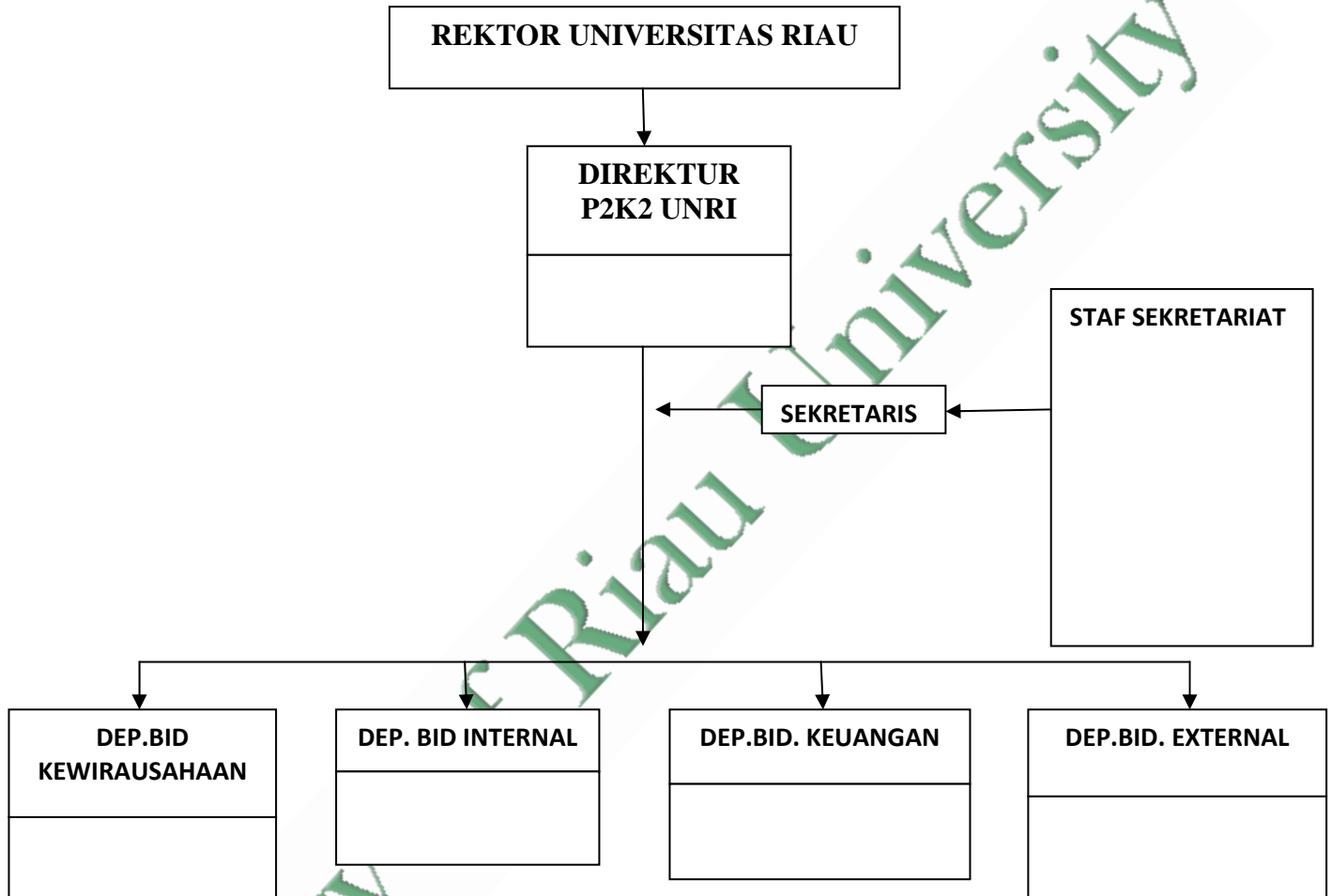
*Through the agreement of the chancellor belonging to the Joint Western State University (BKS PTN-B) and the active role of HEDS (Higher Education Development Supports) Project to anticipate the factual existence of armed gap educated college graduates with employment opportunities is necessary to set up the Central Services Employment (PJK) throughout the State Universities in Western Indonesia.*

*Officially established on the basis of PJK a decree of the Rector Riau University No.205/PT22.H/Q/1990 dated 10 July 1990, then updated with No.79/PT22.H/Q/1992 Rector's Decree dated 8 February 1992.*

*After looking at the world's progress closely, it turns out the role of entrepreneurship in the life of nation and state looks more and more great significance. In addition, see other fact that the educated labor / alumni of colleges, not just job seekers, but it is capable of and the potential to create jobs through entrepreneurship. On that basis, then PJK University of Riau on the new work program, placing entrepreneurship as a flagship program. Hence the name of the Riau University Center for Employment Services (PJK-UR) was renamed the Career and Entrepreneurship Development Center University of Riau (PPKK-UR) which was established through Decree Rector Riau University No.4757/PT222.H/Q/1995 November 28 1995.*

*The nature of the founding of PPKK UR not be separated from the duties and responsibilities of the UR on the alumni and students to prepare and enhance their competitiveness in the struggle for employment and business opportunities, as well as the role of the community as contained in the Tri Dharma College was adopting. To realize this all can not be separated from the establishment of cooperation between the UR with government agencies and private on the principle of equality, partnership and mutual benefit.*

*Scheme of Organization and Personnel  
Career and Entrepreneurship Development Center  
Universitas Riau  
(Sk. Rektor No.604/j19/kp/1999)*



*Services*

*For Students and Alumni UR*

- a. Job and Business Opportunities*
- b. Career and Business Consultancy Services*
- c. Employability Training, eg: Computer, English Language, Accounting, Mechanics, etc*
- d. Job Search Skills Training/JSST*
- e. Entrepreneurship Training*
- f. Special Program Training*
- g. Job Placement*

- h. Internship*
- i. Career Club*

*For Agencies, Businesses and General Public*

- a. Human Resources Planning Consultancy (Macro and Micro)*
- b. Management Training*
- c. Recruitment*
- d. Internship*
- e. Entrepreneurship Training and Consultancy*
- f. Cooperation and Small Scale Business Development and Incubator Program*
- g. Human Resources and Entrepreneurship Studies*

*Activity*

*I. Training*

*A. Cooperation with HEDS Project*

- TOT (Training to Training) Entrepreneurship Management Training (12 Universities)*
- TOT Ability Course Skill (12 universities)*
- Job Search Skill Training for alumni/ UR students*
- Self Employment and Entrepreneurship Development for UR alumni*

*B. Cooperation with Kanwil Depnaker Riau*

- Youth Self Employment Training Professionals since budget year in 1994/1995*
- TOT Enterprise Facilitator for Western Indonesia*
- Training the New Entrepreneurs*

*C. Cooperation with Youth and Sports Minister*

- Youth Entrepreneurship Training since budget year 1996/1997*

*D. Cooperation with Tourism Department, post and telecommunication*

- Woman Entrepreneurship Training in Post and Telecommunication*

*E. Cooperation/Assistance DUE (Development for Undergraduate Education) Project UR-World Bank*

- Improving Agency Performance through staff development*
- Job Search Skill Training for Alumni/ UR students*

- *Improving Institutional performance through technical consulting and management*

*F. Cooperation with PT Sucofindo*

- *Small Business Training Center*

*G. Cooperation with State Minister and Cooperative Office and UKM and PAU-IS Universitas Indonesia*

- *Training for Micro Scale Companion/ supporting the informal sector as a retail business*

*H. Cooperation with Labour Department Riau Province*

- *Motorcycle Mechanical Training*

*I. Cooperation with Labour Department Kabupaten Kampar*

- *Motorcycle Mechanical Training*

*II. Internship*

*A. Internship full timer*

- *PT Caltex Pacific Indonesia (Student and alumni)*
- *PT Kondur Petroleum, SA (alumni)*
- *PT Perkebunan Nusantara V (alumni)*
- *PT Charoen Pokphand Indonesia (alumni)*
- *PT Riau Andalan Pulp and Paper (student and alumni)*
- *PT Surya Dumai Industri, Tbk*
- *PT Indofood Sukses Makmur*
- *PT Sucofindo*

*B. Internship part timer*

*PT. Caltex Pacific Indonesia (students)*

*III. Other Cooperation*

- *With Bank Pembangunan Daerah Riau for Entrepreneurship Development*
- *With Kamar Dagang and Industri Daerah Riau for Entrepreneurship Development*

- *With PT Caltex Pacific Indonesia to experts need assesment study of midle-polytechnic, in year 2000-2006; the study of air quality monitoring, waste water purification research reproduced in PT CPI*
- *With PT Sucofindo to survey the fields of candidates UKK target and monitoring progress target*
- *With the State of Minister for Cooperative Office and UKM for the development of an industrial food*
- *etc*

Library Of Riau University

### **3. Pusat Komputer (PUSKOM)**

#### ***Computer Center***

*Puskom was established in November 8<sup>th</sup> 1989 strengthened by a decree of the rector number 529/PT22.H/Q/1989. The existence of the Computer Centre for University of Riau is a must. Establishment of the Computer Unit to assist the UR in developing higher education in the era of technology and information at this time. In 1994, the central computer which turned into a Computer Unit was inaugurated by Rector Decree No.234/PT22.H/X/1994.*

*Puskom provide university-level computer service, which has the experience and information technology facilities, participate support the strategy and policy of the University of Riau in developing and improving the quality of the academic community resources, particularly in the field of information technology. One of the programs carried out is the operation of computer training.*

*Capacity owned by the University of Riau has increased very significantly. In 2007 University of Riau Internet bandwidth capacity available at 10 Mbps and from 2009 has been upgraded to 45 Mbps, so that with a ratio of greater bandwidth availability, it is hoped the students can more freely access the lecture materials, research and final project.*

*Source: UR Portfolio2010*

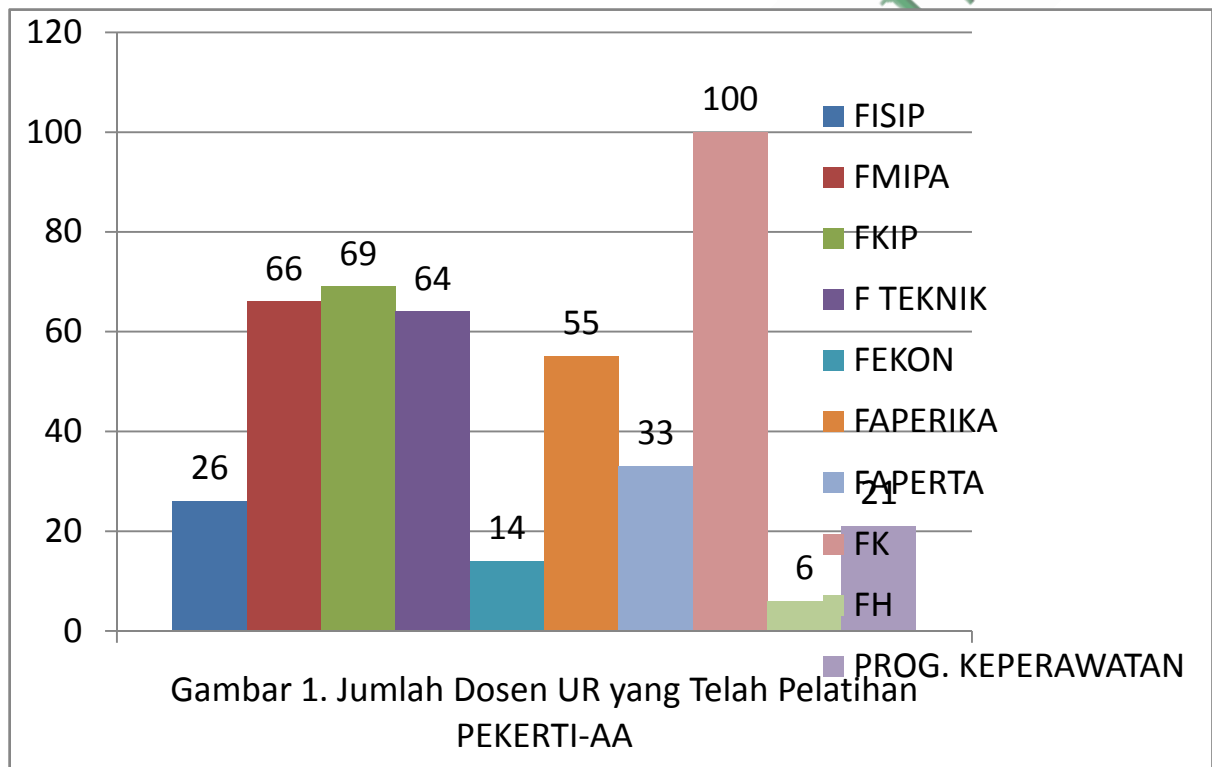
**Library**



#### 4. Pusbangdik (Pusat Pengembangan Pendidikan UR)

##### *UR Education Development Center*

*Education Development Center University of Riau (Pusbangdik UR) was established on January 2, 1998 through UR Rector Decree No. 07/PT22.H/Q/1998 the approval of the Senate dated 14 August 1997.*



*The existence of this center is expected to play to make the assessment, evaluation, analysis and interpretation of reliable and valid for higher education leaders can find ideas in planning the development of education, provide services and assistance to academic staff to increase skills in the learning process and in conjunction with work units relevant to the evaluation results for continuous quality improvement. So in the period 1997-2005 has been formed in Higher Education 41 P3AI Indonesia.*

*At its inception, led by Prof. UR Pusbangdik. Drs. King Samad who was appointed by the Rector's Decree No. UR 11/PT22.H/C/1998 dated January 2, 1998. Vision 2020 "Based on the Decree of the Rector UR Number: 07/PT22.H/Q/1998 dated January*

2, 1998 that Pusbangdik UR perform basic tasks of education under the coordination over the Vice Rector I with the main function held:

- a. Improvement and development of instructional activities
- b. Planning assessment of the implementation of education
- c. Supervision of the implementation of education
- d. Assessment of the implementation of education

Referring to these TUPOKASI, Pusbangdik UR formulate Vision:

*"Being a Referral Center for Educational Development and Learning Activities Based on the values of Malay values"*

Mission: To realize this vision, Pusbangdik UR will carry out the mission:

1. Improve the quality, efficiency, effectiveness and relevance of education and learning process
2. Improving pedagogical competence of educators and education personnel
3. Improve and develop learning resources
4. Develop a conducive academic atmosphere
5. Enhancing cooperation and development education learning

Purpose: Through implementation of its mission, expected to be achievable goals:

1. The implementation process of education and learning at the University of Riau with the quality, effectiveness and high efficiency as well as relevant to the needs of the community, industry and professionals
2. Availability of education and Riau University staff and diverse region with a reliable competence in the field of academic education and professional education
3. Availability and development of quality learning resources and in accordance with the needs of service users
4. The creation of an academic climate that is conducive to the attainment of Vision 2020 UR into University
5. Establishment of cooperation established on the basis of mutual benefit in the use of processes and products in the field of education and learning

STRUKTUR ORGANISASI PUSAT PENGEMBANGAN  
PENDIDIKAN UNIVERSITAS RIAU 2006 - 2010

**Kepala**

**Ir. Gunawan Tabrani, M.Si**

**Sekretaris**

**Ir. Firman Nugroho, MS.**

Koordinator Divisi Peningkatan dan Pengembangan Aktivitas Pembelajaran dan Pendidikan  
Dr. MDH. Gamal, M.Sc.

Koordinator Divisi Pengembangan Sarana dan Media Pembelajaran  
Dr. Achmad Hidir, M.Si.

Koordinator Divisi Pengembangan Pendidikan Bersama  
Dr. Rusli Rustam, SP., M.Si.

Koordinator Divisi Pemasaran dan Kerjasama  
Said Zul Amraini, ST., MT

**TEAM WORK LIN-TAS KEPAKARAN**

**Tim Inti PEKERTI- AA**

**Tim Acad. Leadership**

Library Of Riau

## 5. Perpustakaan

### *Library*

*UR library as a source of information and knowledge continues to improve the quality and quantity of its service. Information and knowledge contained within it can be utilized by the campus community. This community is the vanguard of the advancement of civilization and the improvement of the quality of human life.*

*UR library began from Foundation of University of Riau which was established in September 26<sup>th</sup> 1962. At that time, the initial collections of the library are obtain from the donation of PT Caltex dan MUCIA. In 1980, library of University of Riau had had building the extent of 500m<sup>2</sup> at campus University of Riau jalan Pattimura. In 1992, library of University of Riau moved in new building at campus Bina Widya Panam with an area of 2000m<sup>2</sup>.*

*All the textbooks, handbooks, dictionaries, encyclopedia, which are owned by the Library of UR can be borrowed by the college community (academic society). These collections and facilities were provided to increase the knowledge of the college community, enhance the learning process as one of the UR efforts to produce reliable graduates as demanded by the society.*

*Along with the advancement of the technology, the Library of UR also has equipped itself with a number of online facilities. There is a computer-based catalog to search the collections of the library. By using that computer, the visitors of the library can check the availability of the collections that they need. In addition, it also provides a collection in digital form, particularly local content of the UR <http://digilib.unri.ac.id>. Information concerning the library of UR, can be retrieved from <http://pustaka.unri.ac.id>. Through this website, the visitors can obtain information on procedures for borrowing, a collection of the latest book; subscribed e-journal websites, online catalog, the news concerning library and so forth.*

*Other facilities available are photocopies corner, television lobby and newspaper reading room, seminar room, musholla. All library corners has been covered with wi-fi hotspot access and air conditioner. This can lead to comfort visitors library for reading and discussion. In the library of UR had had another room:*

**Tabel**  
**Size and condition of the room Universitas Riau Library**

| No           | Types of Infrastructure                 | Wide (m <sup>2</sup> ) | Condition |
|--------------|---|------------------------|-----------|
| 1.           | Administration Room                     | 100                    | Good      |
| 2.           | Sirculation Room and Borrowing          | 50                     | Good      |
| 3.           | Reading Room                            | 500                    | Good      |
| 4.           | Processing Library Materials Room       | 100                    | Good      |
| 5.           | Reference Room                          | 100                    | Good      |
| 6.           | Special Collections Room                | 400                    | Good      |
| 7.           | Bookshelf                               | 600                    | Good      |
| 8.           | Concervation Room                       | 50                     | Good      |
| 9.           | Meeting Room/ Audio Visual              | 71                     | Good      |
| 10.          | Leaders Office                          | 25                     | Good      |
| 11.          | Secretary Office                        | 25                     | Good      |
| 12.          | Administration Room                     | 100                    | Good      |
| 13.          | Processing of Digital Collections Rooml | 100                    | Good      |
| 14.          | Etc                                     | 779                    | Good      |
| <b>Total</b> |   | <b>4.000</b>           |           |

Source : UR Library Unit Heads, 2010



(a)

(b)

One of the reading room (a) and the discussion at the Library of UR (b)



(a)

(b)

*Activities in the search books online (a), and photocopier facilities available at the Library of UR (b)*

*The types and library materials available in the UR library and library faculty UR can be seen in Table 9.2 and 9.3 below.*

***Tabel 9.2 Type Collection of UR Library***

| <b><i>NO</i></b>    | <b><i>TYPE COLLECTION</i></b>                 | <b><i>TOTAL TITLE</i></b> | <b><i>NUMBER OF COPIES</i></b> |
|---------------------|---|---------------------------|--------------------------------|
| 1.                  | <i>Teksbooks</i>                              | 31.508                    | 174.966                        |
| 2.                  | <i>Handbooks</i>                              | 932                       | 2.074                          |
| 3.                  | <i>Disertations</i>                           | 30                        | 30                             |
| 4.                  | <i>Thesis</i>                                 | 54                        | 54                             |
| 5.                  | <i>Mini Thesis</i>                            | 63.325                    | 125.132                        |
| 6.                  | <i>Compact Disc</i>                           | 8.607                     | 10.125                         |
| 7.                  | <i>Newspapers</i>                             | 1.104                     | 1.104                          |
| 8.                  | <i>Magazines</i>                              | 1.421                     | 1.532                          |
| 9.                  | <i>Journal/ Scientific Bulletin Journals/</i> | 1.947                     | 2.543                          |
| 10.                 | <i>WorldBank Collections</i>                  | 342                       | 425                            |
| 11.                 | <i>E-Book</i>                                 | 3014                      | 3014                           |
| 12.                 | <i>E-Journal</i>                              | 10 ( <i>Publisher</i> )   |                                |
| <b><i>Total</i></b> |   | <b>112.284</b>            | <b>320.999</b>                 |

*The Number Above Does not include E-Journal*



Source : UR Library Unit Heads, 2010

**Type Collections of the Library Faculties University of Riau**

| No. | Faculty                                     | Type  | Number of Titles | Number of Copies |
|-----|---|---|------------------|------------------|
| 1.  | Faculty of Economics                        | Books   | 1656             | 4100             |
|     |   | National Scientific Journals                    | 38               | 38               |
|     |   | Foreign Scientific Journals                     | 20               | 20               |
|     |   | Local Scientific Journals                       | 2                | 2                |
|     |   | Dissertation                                    | 13               | 13               |
|     |   | Thesis  | 27               | 27               |
|     |   | Mini Thesis                                     | 4628             | 4628             |
| 2.  | Faculty of Mathematics and Natural Sciences | Books   | 1.672            | 3475             |
| 3.  | Faculty of Teachers Training and Education  | Books   | 713              | 9441             |
|     |   | Mini Thesis                                     | 8832             | 8832             |
| 4.  | Faculty of Social and Political Sciences    | Books   |                  | 900              |
|     |   | National Scientific Journals                    | 14               | 26               |
|     |   | Foreign Scientific Journals                     | 2                | 2                |
|     |   | Local Scientific Journals                       | 6                | 31               |
|     |   | Mini Thesis                                     | 1805             | 1805             |
| 5.  | Faculty of Law                              | Books   | 1000             | 1249             |
|     |   | Mini Thesis                                     | 331              | 331              |
| 6.  | Faculty of Medical                          | Books   | 950              | 1929             |
|     |   | National Scientific Journals                    | 20               | 60               |
|     |   | Foreign Scientific Journals                     | 17               | 388              |
|     |   | Compact Disc                                    | 247              | 247              |
|     |   | Thesis  | 11               | 11               |
|     |   | Mini Thesis                                     | 247              | 247              |
| 7.  | Faculty of Fisheries                        | Books   | 1037             | 1439             |
|     |   | National Scientific Journals, Foreign and Local | 192              | 192              |

|              |                                |                                     |               |               |
|--------------|--------------------------------|-------------------------------------|---------------|---------------|
|              |                                | <i>Mini Thesis</i>                  | 1081          | 1081          |
| 8.           | <i>Faculty of Agricultural</i> | <i>Books</i>                        | 649           | 836           |
|              |                                | <i>National Scientific Journals</i> | 140           | 151           |
|              |                                | <i>Local Scientific Journals</i>    | 4             | 4             |
|              |                                | <i>Compact Disc</i>                 | 1             | 1             |
|              |                                | <i>Mini Thesis</i>                  | 479           | 479           |
| 9.           | <i>Faculty of Engineering</i>  | <i>Books</i>                        | 1125          | 3007          |
|              |                                | <i>National Scientific Journals</i> | 31            | 69            |
|              |                                | <i>Foreign Scientific Journals</i>  | 12            | 35            |
|              |                                | <i>Local Scientific Journals</i>    | 11            | 73            |
|              |                                | <i>Mini Thesis</i>                  | 1217          | 1217          |
|              |                                | <i>Newspaper</i>                    | 3             |               |
| <b>Total</b> |                                |                                     | <b>28.233</b> | <b>46.386</b> |

Library Of Riau University

## 6. Lembaga Pengabdian Masyarakat

### *The Community Services Institute*



Earlier, the LPM has the name of the Community Services Center (Pusdimas) was established by Government Regulation no. 5 year 1980 on the main points of the University / institute of the country. In practice Pusdimanas refers to Presidential Decree No. 236 / / PT.22/C/1982, Community Services do not constitute a stand-alone unit, but the elements included in the Institute for Research and Service to the community (LPM), University of Riau, which was formed in 1978.

Community Service Institute (LPM), is the new name given by the decision of the Minister of Education and Culture No.0112/0/1993 RI February 27, 1993, concerning the organization and Administration of University of Riau, which is in Chapter 2, Article 4 states that the University of Riau composed among other organizations devoted to community. LPM is an element of the implementation of the University of Riau's environment to carry out community service activities and go seek the necessary resources.

#### Target

As for targets that will be achieved include: (1) conduct public education activities, aimed at developing human resources through education outside of school. The target group of education in this community are the school dropouts, the traders and businessmen weak, farmers, mothers, housewives, teachers, agency officials to the officials, (2) provide services to the community that require higher education in this regard the University of Riau. The shape

*bias in the form of city planning, planning a special project, the feasibility of the structure, curriculum planning education, health care, legal assistance, various consultations, etc., (3) develop research that produces concepts or patterns of applied knowledge, technology, or art ready-made and the results can be perceived by the user community, (4) in an integrated area development, which resulted in the concept or pattern of regional development planning in an integrated and comprehensive nature were composed of experts who work in interdisciplinary, and (5) implement a real working class (KKN), a community service activity that is specific, since KKN, dharma in education and research combined and involve a number of students and lecturers, and engage the community in service learning activities.*

#### *Organization Dedicated to the Community*

*There's some dedication to community organizing, among others: (1) community service is the application of science, technology and art are institutionalized, a direct benefit to the progress of society, (2) in carrying out the vision, mission, policies and operational plans, the strategic plans and policies LPM University of Riau includes six main contents: (a) Education to the community, (b) Service to the community, (c) The development and application of research results, (d) Development and (e), the application of appropriate technology development areas and development of Field Work Experience . (3) according to the nature of activities in the LMP is classified to (1) pioneering activities ie activities that are pioneering new things to overcome anything the problem (2) support activities in the form of activities that support the activities of other institutions with the aim of accelerating the process for successful development.*

## 7. Unit Pelayanan dan Pengembangan Bahasa (UP2B-UR)

### *Language Development and Service Unit- UR*

*UP2B-UR is one of the technic unit which the main function is to give the services for education, research and services to society. University of Riau now owns a new sophisticated language laboratory located next to FKIP main buliding. This language lab was built and funded by the Chevron Texaco Foundation PT. Caltex Pacific Indonesia as one of its social contributions in improving the quality of human resources especially in Riau Province. The conctruction of the building was completed and ready for use in October 1996 and handed over by the Chevron TexacoFoundation to Universitas Riau on 16 October 1996*

*The commitment of this units are (1) give services to non-english student necessity (i.e S-1 in all over non-english majority), (2) give services for the lectures and staff necessity (particulary in english preparation for study abroad), (3) give learning service for people in Riau to fullfill the needed of public services.*

*Languange Development and Service Unit of University of Riau (UP2B-UNRI) is complex with the sufficient learning facilities, such as: (1) 40 booth and 13 unit AC of languange laboratory, (2) 2 AC rooms with comfortable chairs, (3) independent learning center, complicated with 700 books and 4 computers for independent learning.*

*Language Development Unit is meant to improve the quality of English language students and lecturers. Language Development and Service Unit established by Decree of the Rector Riau University No. 275/PT22.H/Q/1996 in September 3, 1996.*

#### *Task Establishment*

*To improve English language skills for lecturers and students, University of Riau opened a unit called Language Development and Service Unit (UP2B). This unit provides the facility of learning English with the help of computers, called Computer Assisted Language Learning (CALL). The facility is in the form of English learning software which can be used by lecturers and students. This facility also provides software for students and lecturers in preparing for the TOEFL exam.*

*Now, the language lab that is equipped with the most modern equipment at least in five years to come, is ready for operation where 40 students can be accommodated. Therefore, Riau University may take pride in the existence of the language lab which enables the university to grow and develop in accordance with needs of people in the region. This a center where various language courses are going to be held such as English, French, German, and Arabic.*

*It goes without saying that the need for English is now very urgent almost in every field. That's why Riau University is determined to bring its graduates to be ready for use in the job markets. For lecturers, English is one of the requirements to enable them to pursue their study to Master (S2) and Ph.D (S3) programs at home and overseas.*

*In terms of the language program, the Language Center which is operating under the supervision of the rector, has successfully made collaborations with foreign institutions. From March 1996 to August 1996 some 37 students from the National University of Singapore and 14 students from Leiden University, the Netherlands, learned Bahasa Indonesia at Riau University, and the same time they learned culture of Indonesia particularly Riau Malay culture*

*From October 1996 to December 1996 about 150 students of non-English departments from different faculties within Riau University are taking English courses. All of the instructors are the graduates of various universities abroad. That means that Riau University plays a key role in improving the quality of human resources for the national development.*



## **8. Pusat Pelatihan Universitas Riau**

### ***Riau University Training Center (RUTC)***

*Riau University Training Center (RUTC) was established for local, national, and international interest. This center is professionally managed to improve the quality of the community at large.*

*Operationally, RUTC has some programs and services that cover five areas i.e. Agriculture, Chemistry, Biochemistry, Biology, and Environment. In Agriculture, for example, RUTC provides trainings on agricultural machineries for craftsmen and the management of irrigation and swamp water. In Chemistry, the center holds trainings on laboratories, basic instrumentation, and instrumental application, whereas in Biochemistry it provides trainings on the techniques of biochemistry and contemporary molecular biology about the identification of diseases by using Western Blot and PCR techniques and DNA finger print to identify the doer of crime.*

*The area of Biology covers basic techniques of isolation, mushroom oculation, and bacterial water quality test. Programs on environment are also available, among others short courses on environment and dangerous poisonous waste materials, Environmental Impact Analysis (AMDAL), Environmental Impact Control, the improvement and development of environmental laboratories, and river cleaning program in order to improve the quality of water. In addition, RUTC offers a special program such as the use of computers and videos as the media of teaching, presentations, and practical materials of basic sciences at Senior High School. All of these programs involve technicians, laboratories of companies, factories, industries, government departments, field supervisors in agriculture, irrigation workers, lecturers, workshops of agricultural machineries, managers of Unit Village Cooperatives (KUD), Senior High School teachers, farmers, transmigrants, and policemen.*