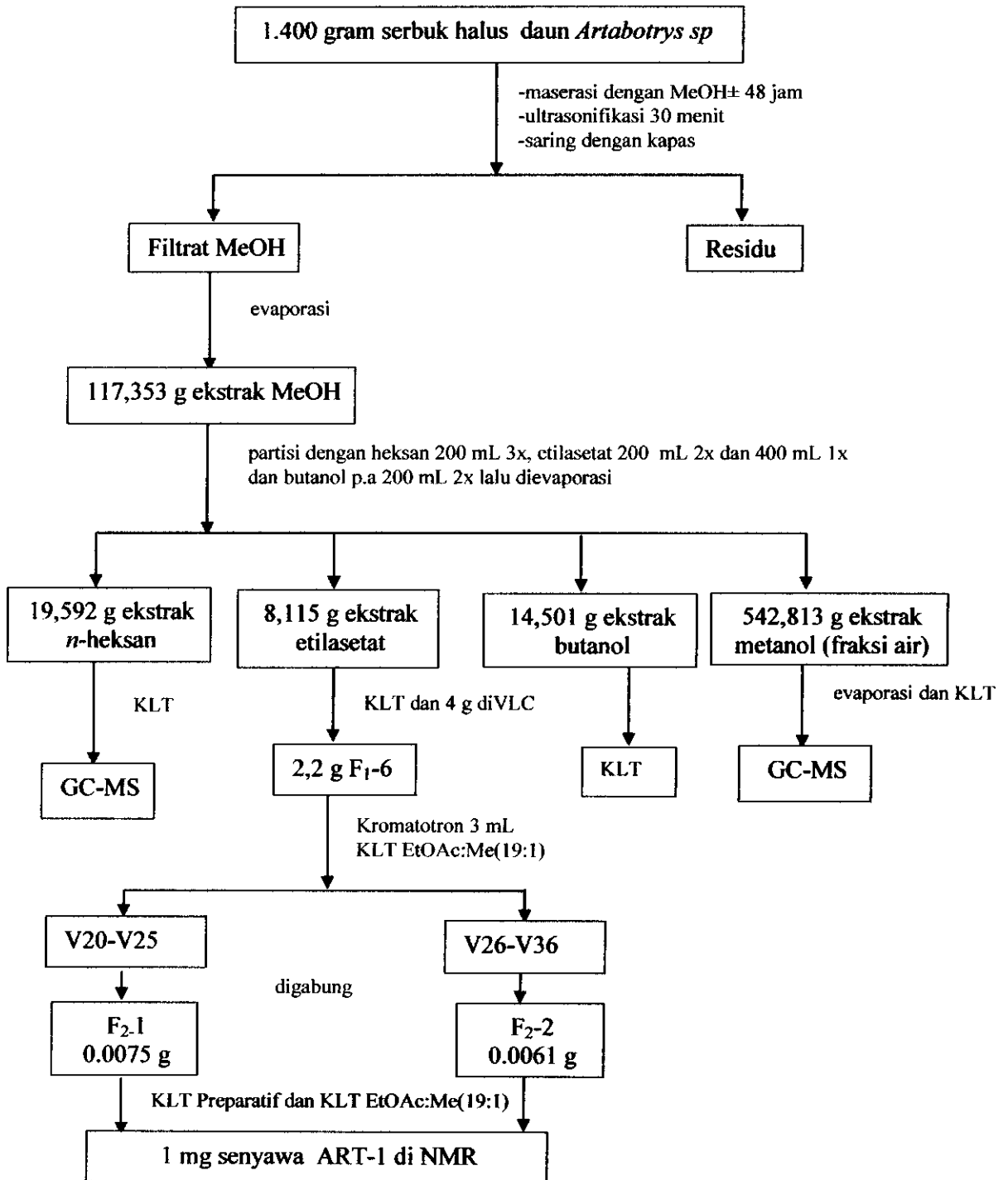


LAMPIRAN

Lampiran 1. Skema kerja isolasi daun *Artabotrys sp* "LTD2-11" (Annonaceae)



Lampiran 2. Hasil uji KLT ekstrak *n*-heksana, etilasetat, butanol dan metanol.

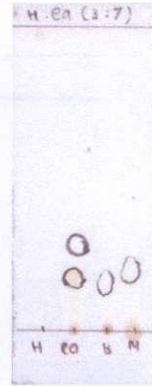
perbandingan pelarut:



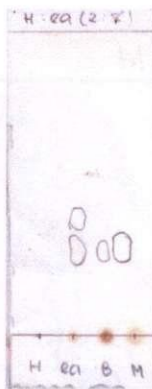
Heksan : Etilasetat
(9:1)



Heksan : Etilasetat
(5:5)



Heksan : Etilasetat
(3:7)

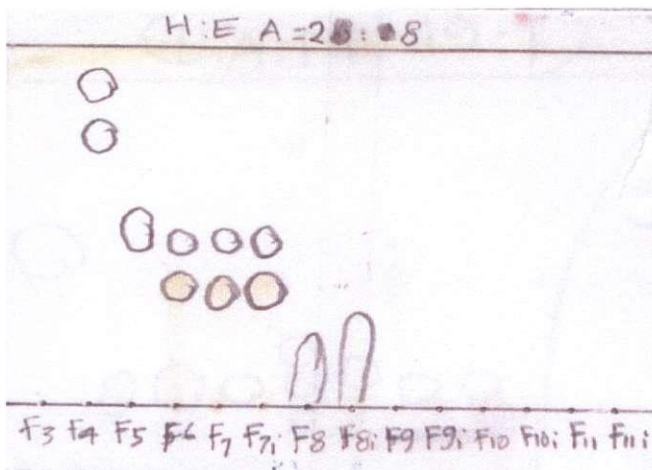


Heksan : Etilasetat
(2:8)

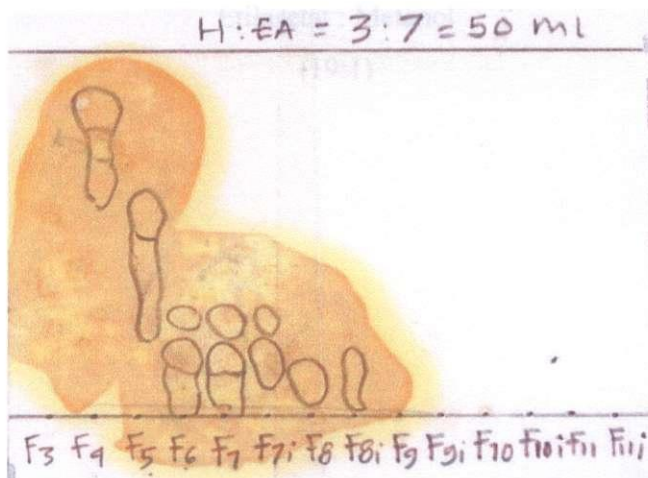


Etilasetat
(100%)

Lampiran 3. Hasil uji KLT ekstrak etilasetat setelah di VLC dengan perbandingan pelarut. (19:1)



Heksan : Etilasetat
(2:8)



Heksan : Etilasetat
(3:7)